



SOMMER Fire Doors B·S·T® DIN

You need ...

- ... a fire door that reliably meets DIN standards and is also very stable.
- ... a fire door which also protects against burglary or which prevents the penetration of fire-fighting and flood.
- ... a fire door which is technically up-to-date.

We offer ...

- ... our proprietary SOMMER fire doors from the B·S·T® series.
- ... the modular SOMMER S1 door system, which covers all safety-related building parameters.
- ... individual doors or in combination.

Your advantage...

- ... we don't just build a door, we build "YOUR" door. Through our system, individual solutions are possible.
- ... SOMMER develops, constructs, produces and installs - everything from a single source. 100% Made in Germany.
- ... and in order to protect you for a long time, the first maintenance is included.

Why SOMMER ...

- extensive experience in building security
- superior know-how
- certified quality
- low-maintenance and durable products
- 10 Year retrofitting guarantee

SOMMER Fire doors B·S·T® Fire Resistance Class T30 and T90 according to German approval

Tested in accordance with DIN 4102. Torsion-resistant door with fibre-free, mineral filling, fully bonded with the outer shells. Dimensionally stable and pressure resistant. Sheet thickness 1.5 mm, galvanised and primed.

Door leaf thickness 63 mm.

Mounting brackets with mortice lock, profile cylinder-prepared. All FS-fitting sets applicable.

2 x three-part construction hinges, galvanized, low profile overhead door closer.

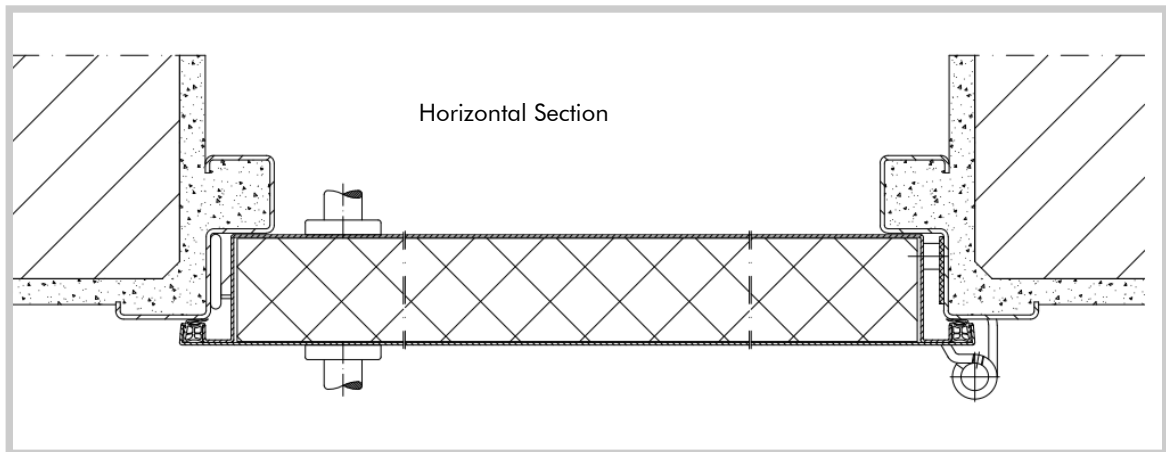
Corner frame made of galvanized and primed 2.5 mm sheet steel. Closed frame or block frame alternatives.

Quality monitoring by the German industrial association for doors and frames (Verband TTZ).

Size ranges:

Single leaf door: from 625 x 1750 mm to 1525 x 4005 mm (T30) or to 1525 x 3010 (T90)

Double leaf door: from 1375 x 1750 mm to 3010 x 4005 mm (T30) or to 3010 x 3010 (T90)



Features:

- glass panels
- different floor connections and seals depending on the installation point
- panic design (also with glass panel)
- self-locking locks
- electronic locks
- electronic security door opener
- door status contacts
- escape door and double door system locking mechanism

Additional options:

- smoke protection according to DIN 18095
- soundproofing up to 47dB
- burglar resistance up to RC3
- bulletproof up to FB7
- blast resistance up to 1 bar
- air tightness
- fire extinguishing and flood retention with defined leakage
- compressive strength
- shielding attenuation (LEMP)

Additional supplementary options or combinations on request.

Contact

SOMMER Fassadensysteme - Stahlbau -
Sicherheitstechnik GmbH & Co. KG
Industriestr. 1, 95182 Döhlau

Sales Department

Phone +49 9286 60-810
Mail: info@sommer-hof.de
www.sommer-hof.de