



SOMMER High Security Door O·S·T® Barrier

You need ...

... a high security door that fulfils barrier requirements for air, gas, water and radiation.

... a high security door that is nevertheless easy to handle thanks to superior engineering.

We offer ...

... detailed custom security doors with separate sealing system.

... support for your project through our highly specialized consultants.

... security for your technical documentation as well through our vetted employees.

Your special advantage ...

... proven security for restricted areas.

... SOMMER designs, constructs, produces and installs everything in-house — 100% Made in Germany.

... reliable maintenance guarantees long term operational safety.

Why SOMMER ...

- Decades of experience engineering for nuclear facilities
- Outstanding know-how made in Germany
- Certified quality
- Durable and low maintenance products

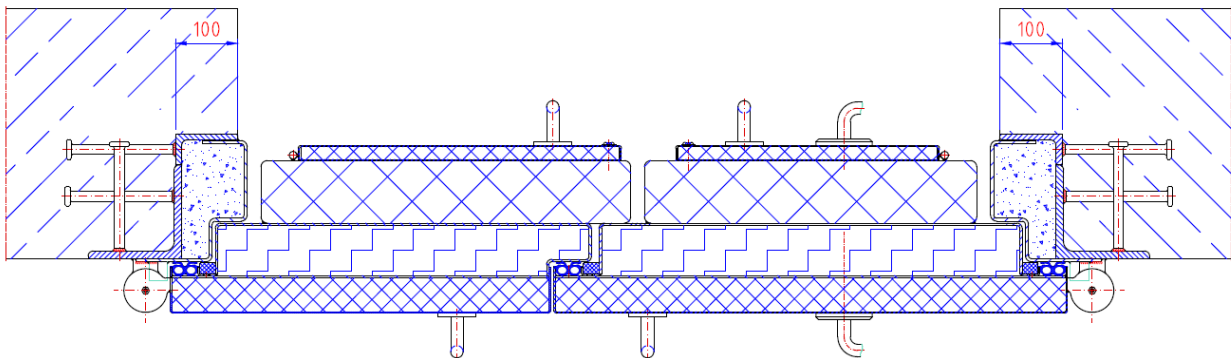
SOMMER High Security Doors O·S·T® -Barrier

Steel door leaf with integrated mounting framework filled with mineral and hardened ceramic fillers or multi-layered door leaf construction with armored filling.

SOMMER Bolt Mechanism with automatic locking. Custom hinges according to your requirements.

Mounting frames are custom designed and depend on the specific door.

Cross Section Barrier C



Optional extras:

- Automatic opening mechanism
 - electric
 - pneumatic
 - electro-hydraulic
- Electric or pneumatic unlocking
- Bolt mechanism heating
- Electromagnetic wireless unlocking
- Door surveillance
- Integration with a variety of access control systems
- Surface surveillance
- Panic door lock block
- Airlock locking
- Combination locks
- Pneumatic sealing system

Combinable with the following extras:

- Fireproof T30 to T120, EI₂60 to EI₂120
- Smokeproof
- Airtight seal with or without defined limited leakage
- Flood retention
- Extinguishing water retention
- Pressure resistance
- Blast-proof
- Heatproof
- HEMP
- LEMP

For other combinations or extras please contact SOMMER security systems.

Contact

SOMMER Fassadensysteme - Stahlbau -
Sicherheitstechnik GmbH & Co. KG
Industriestr. 1, 95182 Döhlau

Sales Department

Tel. +49 9286 60-810
Mail: info@sommer-hof.de
www.sommer-hof.de