



## SOMMER Detention Doors HRT

### You need...

... an approved detention door that meets the high standards for prisons and correctional facilities.

... a detention door which is also an approved fire door.

... a detention door whose wide variety of frames easily allows its use in both new buildings and renovations.

### We offer...

... our proprietary SOMMER detention doors for use in prisons and correction centres, police buildings and court houses, as well as forensic facilities.

... detention doors equipped with windows, food flaps and much more.

... detention doors combinable with other security requirements.

### Your advantage...

... we don't just build a door, we build "YOUR" door.

... SOMMER develops, constructs, produces and installs - everything from a single source. 100% Made in Germany.

... and in order to protect you for a long time, the first maintenance is included.

### Why SOMMER...

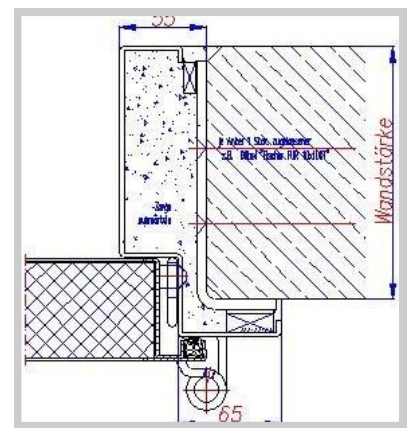
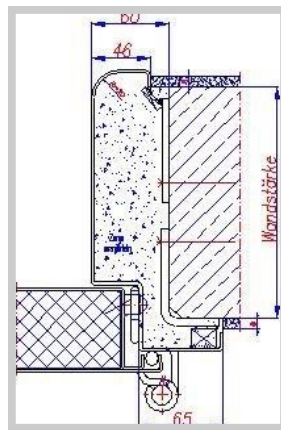
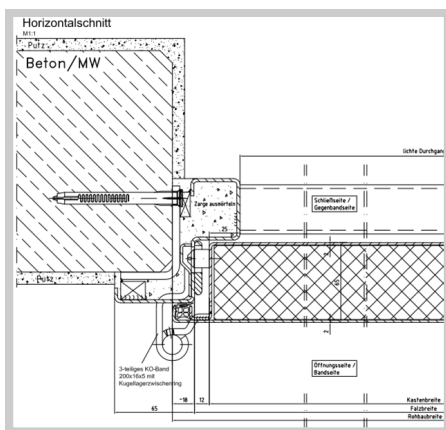
- ◆ extensive experience in building security
- ◆ superior know-how
- ◆ certified quality
- ◆ low-maintenance and durable products
- ◆ 20 year retrofitting guarantee

## SOMMER Detention Doors HRT

Double-skinned door leaf, thickness 65 mm. Inner and outer door shell from 2.0 mm thick sheet-steel. Sound-absorbing door leaf filling. Integrated steel frame for maximum stability. 30 minutes of fire resistance according to JVA regulations; can be opened without technical aids for at least 15 minutes after a fire has been started. Tested and certified for fire safety by MPA in Brunswick according to the directive governing the operation of prisons. Sound-proofing up to 37 dB. 3 or 4-sided framing seam. Tamper-proof mounted door seal. Door leaf opens to 180 ° on the corridor side. Integrated lock pocket prepared for the installation of mechanical or electro-mechanical high security locks from all leading manufacturers. 2 or 3 x 3-part door hinge with ball bearing spacer rings roll formed from 5 mm steel sheet; adjustable. Tempered band bolt. Tamper-proof.

Size range:

Single-leaf door: from 885 x 1850 mm to 1350 x 2400 mm or by request.



### Additions:

- glass panel to observe inmate
- observation window with safety glazing to P8B, as well as a flush-fitting cover
- food flap with food flap lock on the hatch
- protective door sheets made of high-grade steel
- latching chains to limit door opening
- 200° spyhole, installed vandalism-proof, with cover flap
- door condition monitoring
- special locks as per customer request
- quick-release lock

### Optional additional features:

- fire protection E12 according to EN 1634, or T30 according to DIN 4102
- soundproofing to 47 dB
- RC3 or RC4 according to DIN EN 1627
- Type A and Type B according to Vfs Directive 2012
- loading test according to the requirements of the correctional facility

Additional supplementary options or combinations available on request.

### Contact

SOMMER Fassadensysteme - Stahlbau -  
Sicherheitstechnik GmbH & Co. KG  
Industriestr. 1, 95182 Döhlau

### Sales Department

Tel. +49 9286 60-810  
Mail: [info@sommer-hof.de](mailto:info@sommer-hof.de)  
[www.sommer-hof.de](http://www.sommer-hof.de)