



SOMMER Security Door for Closed Areas

You need ...

- ... an approved high security door to close off wards and corridors.
- ... a door which satisfies the relevant requirements protecting against vandalism, burglary, escape and fire.
- ... a door which combines optimal transparency with maximum protection.

We offer ...

- ... our proprietary SOMMER Security Doors for use in open and closed psychiatric departments, in forensics and in law enforcement fields.
- ... combinable with other safety requirements.

Your advantage ...

- ... we have developed a door which works constantly, even when used with high frequency.
- ... as ward or section borders, our security doors reliably withstand any aggressive behaviour
- ... cost-saving designs and durable, functional capability - even under high use.

Why SOMMER ...

- extensive experience in building security
- superior know-how
- certified quality
- low-maintenance and durable products
- 10 year retrofitting guarantee

SOMMER Security Door for closed areas (final ward)

Closed off ward with integrated SOMMER High Security Door O · S · T ®-2 as a steel door with full-size glass panel or cassette filling and glazed side panels. As an interior element or exterior door for transition areas to the ward division, with high security and/or fire protection requirements.

As an interior partition element for burglary and bullet-resistant door areas. Door leaf opens 180° on the corridor side, door leaf thickness 65 mm, sheet thickness 1.5 mm. System frame with rounded edges. Various floor connections and sill forms are selectable.

Two three-piece hinges with ball bearing baffle rings, roll formed from 5 mm steel sheet; hardened steel hinge, tamper-proof, adjustable, maintenance free. Profile cylinder and special locks as single locks and multi-point locks with latch and deadbolt monitoring.

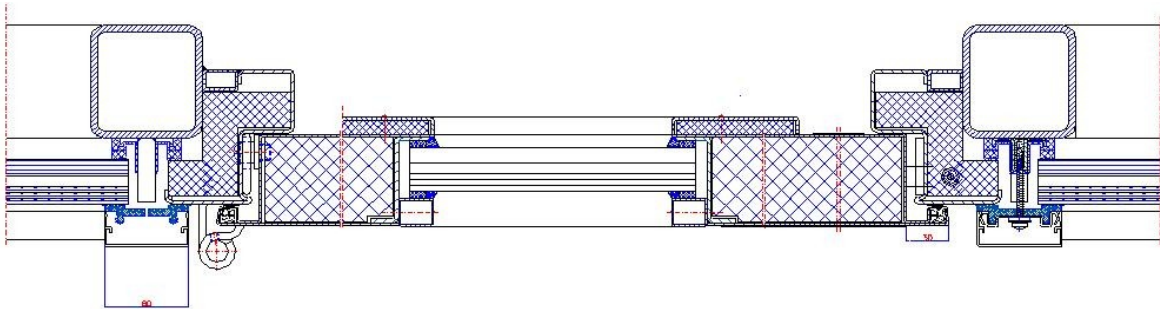
Installation of mechanical and electro-mechanical high security locks from all leading manufacturers is possible.

Size Ranges:

Door, Single-wing: max. 1250 x 2500 mm or per request

Door, Double-wings: max. 2375 x 2500 mm or per request

Side panels and skylight are without size limitation.



Additional equipment:

- lock types with special lock functions
- lock installation in the frame
- safety bolts
- door protection panel made of high-grade steel
- door drives in conjunction with correctional facility motor-driven locks
- integrated media column
- electrical control and signalling devices
- connection to access control systems

Additional options:

- Fire retardant to T90 in combination with burglary/break-out RC4 and bullets FB4 NS

Additional supplementary options or combinations available on request.

ContaCt

SOMMER Fassadensysteme - Stahlbau -
Sicherheitstechnik GmbH & Co. KG
Industriestr. 1, 95182 Döhlau

Sales Department

Tel. +49 9286 60-810
Mail: info@sommer-hof.de
www.sommer-hof.de